

IRISS®



Infra Red Inspection Support Solutions



IRISS® Infra Red Inspection Viewing panes and grills are designed to eliminate risks associated with conducting Thermographic Inspections of Energised switchgear and electrical installations

VP12 Ultrasound and Infrared Inspection Ports

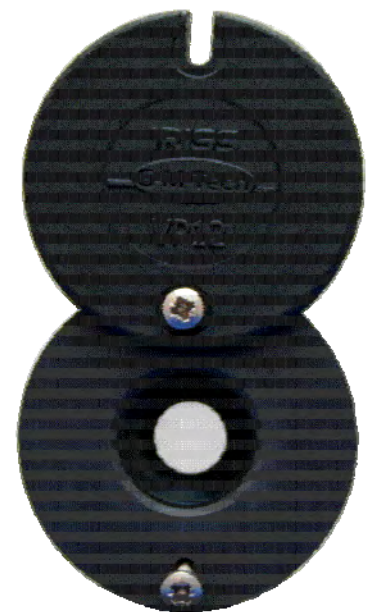
Features of the IRISS VP12 Range

When used as an Infrared viewing Pane:

- ◆ Allows Safe Thermal Imaging of Fully Energized Electrical Components through Closed Doors.
- ◆ IEEE C37.20.2 Compliant For Metal Clad and Station Switchgear.
- ◆ Front cover lock and IR lens supplied as standard.
- ◆ Excellent IR transmission.
- ◆ IP65 / NEMA 4 Rated Both Open & Closed.

When used as an Ultrasound Inspection port:

- ◆ 12mm access point for ultrasound equipment
- ◆ Internal protective grill provided as standard.
- ◆ Allows Safe ultrasound inspections of Fully Energized Electrical Components through Closed Doors.
- ◆ IP65 / NEMA 4 Rated only when closed.



All VP12 ports are:

- ◆ Manufactured Using Non Conductive Materials.
- ◆ UL94 5VA Flammability Rated Assembly.
- ◆ Simple to install (takes approximately 10 minutes).
- ◆ Provided with infrared lens and ultrasound Grill Assemblies



Using IRISS® IR Viewing Panes for LIVE IR Inspections Avoids 99.9% of the Triggers of Arc Flash

Web: www.iriss.com |

Tel: +1 941-373-1528

| Email: info@iriss.com

VP12 ULTRASOUND AND INFRARED INSPECTION PORT

IRISS VP12 (Viewing Port 12 mm Diameter) range of IR windows has a viewing grill and IR Lens as standard and is the first inspection port to offer a client the ability to install an inspection port that can be tailored to either the Infrared or ultrasound program or both!!.

VP12 Infra Red Viewing Panes

IRISS have designed and built the VP12 range using the same high quality materials as the standard VPFR range of IR viewing panes. When used as an infrared viewing pane this range are the only IR Viewing Pane assembly that is IP65 rated (NEMA 4) when open that has a lens assembly that has passed all the test requirements of UL508a and UL746 C 6th Edition. As well as IEEE C.37.20.2 section a.3.6.



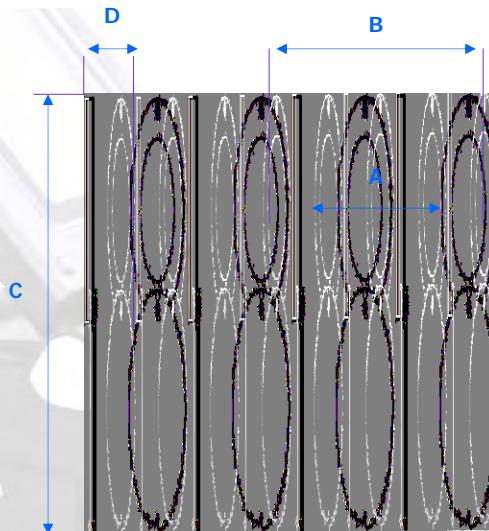
Important Safety Note:

When used as an IR viewing pane the VP12 Range meet the IEEE standard (C.37.20.2 section a.3.6) for Visual viewing panes in medium and high voltage electrical equipment. When used as an ultrasound inspection port all PPE requirements must be strictly adhered to.

SPECIFICATIONS

DIMENSIONS VP12:

- A = 13mm
- B = 65mm
- C = 110mm
- D = 20mm
- Package weight VPFR = 88g



Note:

Each IR viewing pane assembly is supplied with the following:

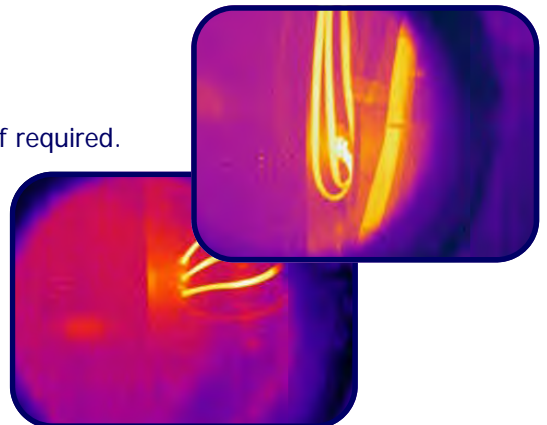
- ◆ Additional set of extra long stainless steel fixing screws.
- ◆ Optional stainless steel torx locking screw for additional security if required.
- ◆ Fitting Template & Instructions.
- ◆ IR Viewing Pane Instructions for use label.
- ◆ IR Viewing Pane Operator ID labels

Your Local IRISS Agent is:



Infrared Predictive Surveys, Inc.
2758 Lynn Street, Frederick, Maryland 21704

Phone: 301-831-1978 | Toll Free: 800-869-3720
Fax: 301-874-2295 | Email: info@infraredpsi.com
www.infraredpsi.com



For more information on IRISS products visit www.iriss.com or contact your local agent