



**INFRARED
PREDICTIVE
SURVEYS
INCORPORATED**

Your Company's Choice When Reliability is Key

Building Envelope Inspections

Infrared Inspection services for assessing Commercial/
Industrial Building Envelopes

Identifying problems with building systems

The building envelope is a critical component of any commercial or industrial facility because it plays a major role in regulating the indoor environment and, of course, protecting the building occupants from weather and climate.

Repairs and maintenance of any building can place a very large burden on the owner especially if the building envelope was poorly constructed, included substandard materials, or had not been properly maintained.

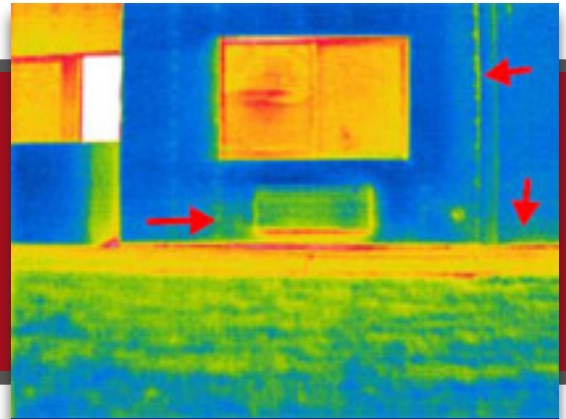
Infrared thermography is a powerful quality control and forensic tool for assessing air leakage and moisture problems in buildings. As such, it has been highly effective in:

- Assessing Building Energy Loss
- Conducting Moisture Surveys
- Evaluating Exterior Insulation Finish Systems (EIFS)
- Examining Concrete Masonry Units (CMU)
- Assuring Building System Quality
- and more...

Using a systematic approach

At Infrared Predictive Surveys, Inc., we take a systematic approach to properly detect and evaluate wet areas and/or damaged wall components on buildings. Our Certified Thermographers combine visual inspections with use high quality, high resolution thermal imaging cameras to provide superior imaging quality and accurate evaluation of your thermal situation.

We videotape the overall area to be scanned and capture areas of interest as single IR photographs. When the inspection has been completed, we provide the video on DVD or CD and include it with our report of observations and findings.



IPSI Capabilities

In addition to infrared thermography for electrical, mechanical, refractory, steam systems and other applications, our project experience includes all elements for the building envelope including: roofing, air barriers, and Exterior Insulated Finish Systems (EIFS).

Our thermographers are trained in accordance with ASNT Recommended Practice SNT-TC-1A for Level 1, Level 2 and Level 3 in Infrared Thermography. They also bring more than 15 years experience in construction related industries, roofing, high voltage and IR program implementation and development.

Contact

Infrared Predictive Surveys, Inc.
2758 Lynn Street
Frederick, Maryland 21704

Phone: 301-831-1978
Toll Free: 800-869-3720
Fax: 301-874-2295
Email: info@infraredpsi.com

Additional Locations

Infrared Predictive Surveys, Inc.
Pittsfield, Massachusetts
Call: 1-800-869-3720
Email: info@infraredpsi.com

Infrared Predictive Surveys, Inc.
Seattle, Washington
Call: 1-800-869-3720
Email: info@infraredpsi.com

www.infraredpsi.com